

***From the World of Dreams: Melanesian Art
and a small retrospective of Surrealist Prints curated by Timothy Baum***
2 May - 3 July 2024

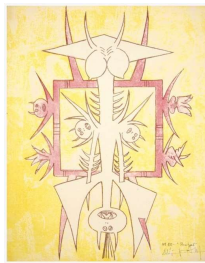


KWOMA ARTIST

Yina Figure
Washkuk Hills, Papua New Guinea
Late 19th-early 20th century
Wood, pigments
Height: 68 inches (172.3 cm)
Inv# 54-5668

Provenance:

Collected by Douglas Newton, 1960s
Ex Staempfli Gallery, New York
Ex private collection, New York



Wifredo Lam (1902-1982)

Quetzal from Brunidor Portfolio No. 1
1947
Lithograph in color on wove paper
16 1/2 x 13 inches
Edition of 84 (80/84)
Signed, titled and numbered in ink
Inv# 01C-167-4701

Literature:

Tonneau-Ryckelynck 4701
Surrealist Prints 60

Printed by Atelier 17, New York
Published by Brunidor Editions, New York

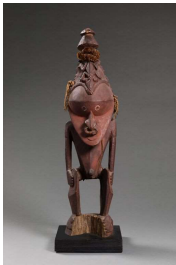
*From the World of Dreams: Melanesian Art
and a small retrospective of Surrealist Prints curated by Timothy Baum*
2 May - 3 July 2024



Max Ernst (1891-1976)
Masques
1950
Lithograph in color on Arches paper
13 x 19 3/4 inches
Edition of 200 (180/200)
Signed and numbered in pencil
Inv# 01C-165-049

Literature:
Spies-Leppien 46

Published by *Guilde de la Gravure*, Geneva and Paris



RAMU RIVER ARTIST
Ancestral Figure
Papua New Guinea
Late 19th-early 20th century
Wood, pigment
Height: 23 1/4 in (59.2 cm)
Inv# 54-5671

Provenance:
Ex collection Meulendijk, Rotterdam
Ex private collection, New York



ELEMA ARTIST
Eharo Mask
Papua New Guinea
Early 20th century
Tapa, cane, pigment
Dimensions: 41 x 16 x 27 in (104.1 x 40.6
x 68.6 cm)
Inv# 54-5629

Provenance:
Ex Wayne Heathcote
Ex private collection, New York, acquired from the above in 1995



ABELAM ARTIST
Ancestral Figure
Maprik mountains, Papua New Guinea
Late 19th century-early 20th century
Wood, pigments
Height: 29 in (73.7 cm)
Inv# 54-5672

Provenance:
Ex Ruth & George Kennedy, Los Angeles
Ex private collection, New York, purchased from above in early 1980s

***From the World of Dreams: Melanesian Art
and a small retrospective of Surrealist Prints curated by Timothy Baum***
2 May - 3 July 2024



NEW IRELAND ARTIST
Malagan Ceremonial Panel
New Ireland
19th century-early 20th century
Wood, pigments, *turbo petholatus*
operculum
Height: 87 in (221 cm)
Inv# 54-5676

Provenance:
Ex Hiltrup Mission Museum, Hiltrup, Germany
Ex Loed Van Bussel, Amsterdam
Ex Harvey Menist, Amsterdam
Ex private collection, New York



Joan Miró (1893-1983)
La géante
1938
Drypoint on Arches paper
13 5/8 x 9 1/4 inches
One of two proofs of the first state pulled
by Miró aside from the edition of 30
Signed, dated and inscribed in pencil
'mars 1938/tiréé par moi-même/2 ième
état 1/1
Inv# 01C-003-027

Literature:
Dupin 27

Engraved at Louis Marcoussis' studio and printed at Atelier Lacourrière,
Paris
Co-published by Pierre Loeb, Paris and Pierre Matisse, New York



Joan Miró (1893-1983)
Daphnis et Chloé
1933
Drypoint on Japon paper
12 3/4 x 10 3/8 inches
Edition of 10 (7/10) aside from the
edition of 100 on Arches paper
Signed, dated and numbered in pencil
Inv# 01C-003-009.7

Provenance:
Ex collection Gilbert E. Kaplan

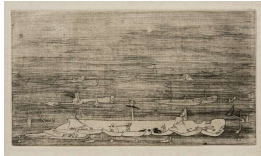
Literature:
Dupin 9
Surrealist Prints 79

Printed by Atelier Lacourrière, Paris
Published by Tériade, Paris

***From the World of Dreams: Melanesian Art
and a small retrospective of Surrealist Prints curated by Timothy Baum***
2 May - 3 July 2024



Man Ray (1890-1976)
André Breton
1935
Vintage silver print
9 1/2 x 7 inches
Inv# 01C-168-002



Yves Tanguy (1900-1955)
Untitled
1937
Etching on Auvergne laid paper
4 5/8 x 8 3/4 inches

Unique trial proof aside from the edition
of 10

Inv# 01C-036-005

Provenance:

Ex collection Stanley William Hayter, Paris

Literature:

Wittrock 5
Surrealist Prints 118

Printed by Atelier 17, Paris



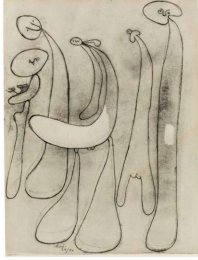
Salvador Dalí (1904-1989)
La Revolver à cheveux blancs
1932
Etching and engraving on wove paper
6 x 4 5/8 inches
Proof aside from the deluxe edition of 10
Inv# 01c-162-006

Literature:

Michler & Löpsinger 6

Published by Éditions des Cahiers libres, Paris

***From the World of Dreams: Melanesian Art
and a small retrospective of Surrealist Prints curated by Timothy Baum***
2 May - 3 July 2024



Joan Miró (1893-1983)
*Untitled from 24 Essais by Anatole
Jakovski*
1935
Etching on laid rag paper
12 3/4 x 9 7/8 inches
Edition of 50 (14/50)
Signed and numbered in pencil
Inv# 01C-003-016

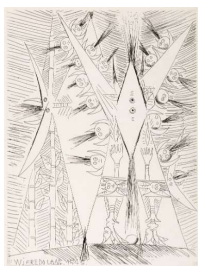
Literature:
Dupin 16

Printed by Tanneur
Published by Éditions Orobitz et Cie., Paris



NEW GEORGIA ISLANDS ARTIST
Canoe Prow, muzu muzu
New Georgia Islands, Marova lagoon,
Solomon Islands
Late 19th-early 20th century
Wood, shell inlay
Height: 6 in (15.2 cm)
Inv# 54-5677

Provenance:
Ex collection Nicolai Michoutouchkine, Port Vila, Vanuatu
Ex Wayne Heathcote, London
Ex private collection, New York



Wifredo Lam (1902-1982)
*Sans titre from Voyages à travers la
peinture by Pierre Loeb*
1945
Etching on Rives paper
7 7/8 x 5 7/8 inches
Edition of 124 (69/124)
Signed and numbered in pencil
Inv# 01C-167-4501

Literature:
Tonneau-Ryckelynck 4501

Published by Éditions Bordas, Paris

***From the World of Dreams: Melanesian Art
and a small retrospective of Surrealist Prints curated by Timothy Baum***
2 May - 3 July 2024



Joan Miró (1893-1983)

La ligne d'horizon

1938

Drypoint and etching on Arches paper

7 3/4 x 10 1/2 inches

Edition of 30 (6/30)

Signed and numbered in pencil

Inv# 01C-003-029A.6

Provenance:

Ex collection Gilbert E. Kaplan

Literature:

Dupin 29

Engraved at Louis Marcoussis' studio and printed at Atelier Lacourière,
Paris

Co-published by Pierre Loeb, Paris and Pierre Matisse, New York



Max Ernst (1891-1976)

Correspondances dangeureuses from

Brunidor Portfolio, No. 1

1947

Etching on wove paper

11 7/8 x 8 7/8 inches

Edition of 70 (14/70)

Signed and numbered in pencil

Inv# 01C-165-025

Literature:

Spies & Leppien 25

Surrealist Prints 53

Printed by Atelier 17, New York

Published by Brunidor Editions, New York



Pablo Picasso (1881-1973)

Marie-Thérèse considérant son effigie

surréaliste sculptée (Marie-Thérèse

Considering Her Sculpted Surrealist

Effigy) from Suite Vollard

1933

Etching

10 1/2 x 7 5/8 inches

Edition of 260

Signed in pencil

Inv# 01C-001-0187A

Literature:

Bloch 187; Baer 346

Printed by Roger Lacourière, Paris

Published by Ambroise Vollard

***From the World of Dreams: Melanesian Art
and a small retrospective of Surrealist Prints curated by Timothy Baum***
2 May - 3 July 2024



NEW IRELAND ARTIST

Malagan Figure
New Ireland
19th century
Wood, pigments, *turbo petholatus*
operculum
Height: 53 in (134.6 cm)
Inv# 54-5675

Provenance:

Ex John J. Klejman, New York
Ex Arthur Cohen and Elaine Lustig Cohen, New York, acquired from
above in 1956
Ex private collection, New York

Literature:

A.B. Meyer & W. Foy. *Tanzobjekte vom Bismarck Archipel, Nissan und
Buka*. Dresden, 1900. pl. XIV, fig. 6



NEW IRELAND ARTIST

Malagan Mask
New Ireland
19th century-early 20th century
Wood, pigments, *turbo petholatus*
operculum
Height: 60 in (152.4 cm)
Inv# 54-5670

Provenance:

Ex Dresden Museum, Germany (Inventory number 7178)
Ex Everett Rassiga, US/Hungary
Ex private collection, New York, purchased from above



Yves Tanguy(1900-1955)
*Rhabdomancie from Brunidor Portfolio
No. 1*
1947
Etching with monotype
8 7/8 x 11 5/8 inches
Edition of 70 (56/70)
Signed, numbered and dated in pencil
Inv# 01C-036-013

Printer by Atelier 17, New York
Published by Brunidor Editions

***From the World of Dreams: Melanesian Art
and a small retrospective of Surrealist Prints curated by Timothy Baum***

2 May - 3 July 2024



André Masson (1896-1987)

Rêve d'un future désert

1942

Etching and drypoint on wove paper

18 3/4 × 24 1/5 inches

Edition of 35 (18/35) 18 known
impressions

Signed and numbered in pencil

Inv# 01C-053-090.18

Provenance:

Ex collection Larry Sapphire

Literature:

Sapphire 90

Printed by Atelier 17, New York

Co-published by Buchholz Gallery and Kurt Valentin, New York



Man Ray (1890-1976)

Louis Aragon and André Breton

c. 1924

Vintage silver print

6 3/4 × 8 3/4 inches

Signed in pencil

Inv# 01C-168-001

Exhibited:

Perpetual Motif: The Art of Man Ray

National Museum of American Art, Smithsonian Institution. Washington,
D.C. 2 December 1988-20 February 1989

Museum of Contemporary Art, Los Angeles. 19 March-28 May 1989

The Menil Collection, Houston. 30 June 1989-17 September 1989

Philadelphia Museum of Art. 22 October-7 January 1990

Man Ray, Rétrospective 1912-1976. 22 February - 9 June 1997. Musée
d'art moderne et d'art contemporain, Nice

Man Ray Portraits

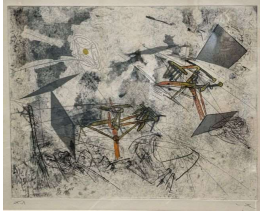
National Portrait Gallery, London. 7 February-27 May 2013

Man Ray's Paris Portraits 1921-1939

In collaboration with Timothy Baum

Di Donna Galleries, New York. 26 April - 30 June 2023

***From the World of Dreams: Melanesian Art
and a small retrospective of Surrealist Prints curated by Timothy Baum***
2 May - 3 July 2024



Roberto Matta

Cosmicstrip II from the Cosmicstrip series

1959

Etching and aquatint

19 3/8 x 14 3/4 inches

Signed in pencil

Trial proof aside from the edition of 50

Inv# 01C-172-043

Printed by Atelier Georges Visat

Published by Editions Allan Frumkin Gallery, Chicago



**ATTRIBUTED TO THE MASTER OF THE
DOUBLE PILLOW**

Neckrest

Sepik river, Papua New Guinea

19th century

Wood

Dimensions: 6 3/4 H x 5 3/4 W x 16 L in

(17.1 x 14.6 x 40.6 cm)

Inv# 54-5627

Provenance:

Náprstek Museum of Asian, African and American Cultures, Prague. no. 16.534, prior to 1916

Hôtel Drouot Paris, *Arts Primitifs*. 26 May 1983, lot 165

Ex Gallery d'Eendt, Amsterdam

Sotheby's New York, 18 May 1992, lot 56

Ex private collection, New York



Max Ernst (1891-1976)

Untitled from Almanach Surréaliste du Demi-Siècle

1950

Lithograph printed in color

11 x 15 inches

Edition of 25 (25/25) full sheet format

aside from the folded edition of 116

Signed and numbered in pencil

Inv# 01C-165-035

Literature:

Spies 35C

Printed by Desjobert, Paris

Published by Éditions du Sagittaire

***From the World of Dreams: Melanesian Art
and a small retrospective of Surrealist Prints curated by Timothy Baum***
2 May - 3 July 2024



Yves Tanguy (1900-1955)
Frontispiece for L'Île d'un jour by
Marcelle Ferry
1938
Etching
3 5/8 x 7 3/4 inches
Hors commerce aside from the edition of
30
Signed in pencil
Inv# 01C-036-001



Dorothea Tanning
Bateau bleu (The Grotto)
1950
Lithograph in color
19 1/2 x 13 3/8 inches
Edition of 200 (90/200)
Signed and numbered in pencil
Inv# 01C-170-005

Printed by Desjobert, Paris
Published by Guilde de la Gravure, Paris



René Magritte
*La Comtesse de Monte Cristo from Aube
à l'Antipode*
1966
Etching on Richard de Bas paper
8 1/4 x 6 1/4 inches
Edition of 77 (62/77)
Signed and numbered in pencil
Inv# 01C-037-006

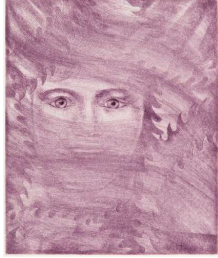
Literature:
Kaplan and Baum 6

Published by Atelier Rigal, Paris



Hans Bellmer (1901-1975)
Main articulée
1951-52
Lithograph printed in color
11 1/4 x 15 inches
One of approximately 10-12 proofs
printed in a variety of color combinations
Signed in pencil
Inv# 01C-161-001

***From the World of Dreams: Melanesian Art
and a small retrospective of Surrealist Prints curated by Timothy Baum***
2 May - 3 July 2024



Valentine Hugo (1890-1968)
*Portrait de René Crevel from Feuilles
éparses*
1965
Drypoint in purple on Rives paper
8 1/4 x 6 7/8 inches
Edition of 50 (37/50) aside from the book
edition of 130
Signed and numbered in pencil
Inv# 01C-173-001

Printed by Georges Leblanc
Published by Louis Broder, Paris



Marcel Jean (1900-1993)
Le souvenir
1935
Etching
2 5/8 x 3 11/16 inches
Edition of 11 (10/11)
Signed, numbered and inscribed in
pencil
Inv# 01C-166-001



SEPIK ARTIST
Barag Mask
Coastal Sepik river, Papua New Guinea
Late 19th century-early 20th century
Wood, pigment
Height: 20 in (50.8 cm)
Inv# 54-5673

Provenance:
Ex private collection, New York



Joan Miró (1893-1983)
Les trois soeurs
1938
Etching with drypoint on Arches paper
10 1/2 x 7 3/4 inches
Edition of 30 (10/30)
Signed and numbered in pencil
Inv# 01C-003-025.10

Literature:
Dupin 25

Engraved at Louis Marcoussis' studio and printed at Atelier Lacourière,
Paris
Co-published by Pierre Loeb, Paris and Pierre Matisse, New York

***From the World of Dreams: Melanesian Art
and a small retrospective of Surrealist Prints curated by Timothy Baum***
2 May - 3 July 2024



Kurt Seligmann (1900-1962)
Phantom of the Past from *VVV Portfolio*
1942
Etching and aquatint on wove paper
13 7/8 x 11 5/8 inches
Signed in pencil
Inv# 01C-169-116

Literature:
Mason 116



Kurt Seligmann (1900-1962)
Wrested from Mirrors
1941
Etching on Umbria Italia paper
9 7/8 x 7 1/2 inches
Signed in pencil
Inv# 01C-169-089

Literature:
Mason 89

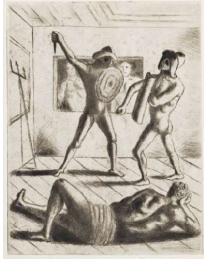


Max Ernst (1891-1976)
Danseuses
1950
Lithograph on Arches paper
19 1/2 x 12 3/4 inches
Edition of 200 (180/200)
Signed and numbered in pencil
Inv# 01C-165-046

Literature:
Spies-Leppian 46
Surrealist Prints 54

Published by *Guilde de la Gravure*, Geneva and Paris

***From the World of Dreams: Melanesian Art
and a small retrospective of Surrealist Prints curated by Timothy Baum***
2 May - 3 July 2024



Giorgio de Chirico (1888-1978)
Scuola di gladiatori from Jean Cocteau's
Le Mystère Laïc
1928
Etching and drypoint on wove paper
7 x 5 1/2 inches
Edition of 100 (66/100)
Signed and numbered in pencil
Inv# 01C-163-004

Provenance:
Ex collection Gilbert E. Kaplan

Literature:
Ciranna 4
Surrealist Prints 16

Published by Editions des Quatre Chemins, Paris



Giorgio de Chirico (1888-1978)
Combattimento di gladiatori from Jean
Cocteau's *Le Mystère Laïc*
1928
Etching and drypoint on wove paper
5 1/2 x 7 inches
Edition of 100 (66/100)
Signed and numbered in pencil
Inv# 01C-163-003

Literature:
Ciranna 3
Surrealist Prints 15

Published by Editions des Quatre Chemins, Paris



After Marcel Duchamp (1887-1968)
La Mariée
1934
Aquatint printed in color on Arches
paper by Jacques Villon (1875-1963)
19 1/2 x 12 1/4 inches
Edition of 200 (121/200)
Titled, signed and numbered by
Duchamp and Villon in pencil
Inv# 01C-164-433

Literature:
Schwarz 433
Ginestet & Pouillon E672

Printed by Galerie Bernheim-Jeune, Paris

***From the World of Dreams: Melanesian Art
and a small retrospective of Surrealist Prints curated by Timothy Baum***
2 May - 3 July 2024

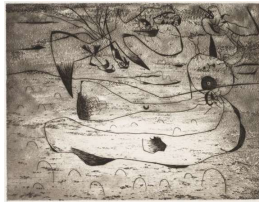


TURAMARUBI ARTIST

Imunu Neckrest
Turama river, Papua New Guinea
Late 19th century-early 20th century
Wood
Height: 34 in (86.4 cm)
Inv# 54-5674

Provenance:

Ex Wayne Heathcote
Ex private collection, New York



Joan Miró (1893-1983)

L'Aigle et la femme la nuit
1938
Etching with drypoint on Arches paper
8 7/8 x 11 5/8 inches
Edition of 30 (16/30)
Signed and numbered in pencil
Inv# 01C-003-022

Provenance:

Ex collection Lois B. Torf, Boston

Literature:

Dupin 22

Engraved at Louis Marcoussis' studio and printed at Atelier Lacourière,
Paris
Co-published by Pierre Loeb, Paris and Pierre Matisse, New York



Victor Brauner (1903-1963)

Untitled from Brunidor Portfolio No. 2
1947-52
Pair of etchings with hand-coloring
printed on a single sheet
13 x 16 1/2 inches
Edition of 110 (57/110)
Signed, dated and numbered in pencil
Inv# 01C-171-001

Published by Robert Altmann/Brunidor Editions, Paris, 1946-52

***From the World of Dreams: Melanesian Art
and a small retrospective of Surrealist Prints curated by Timothy Baum***
2 May - 3 July 2024



ABELAM ARTIST

Ancestor Figure
Maprik mountains, Papua New Guinea
Early 20th century

Wood
Height: 55 inches (140 cm)
Inv# 54-4758

Provenance:

Ex Ruth and George Kennedy, Los Angeles
Ex Bruce Frank, New York
Ex private collection, Connecticut



KARAWARI RIVER ARTIST

Spirit Figure
Karawari river, Papua New Guinea
18th century or earlier
Wood with traces of white lime
Height: 46 1/2 in (118.1 cm)
Inv# 54-5669

Provenance:

Ex Ruth and George Kennedy, Los Angeles
Ex private collection, New York

Exhibited:

Art of New Guinea. Seprik, Maprik and Highlands. Ethnic Art Galleries, University of California, Los Angeles. November-December 1967
The Ruth & George C. Kennedy Collection of Ethnic Art. Bowers Museum, Santa Ana, California. 29 September-30 December 1979
Ancestral Art of the Sepik Region New Guinea. Fine Arts Museum of Long Island, Hempstead, New York. 14 July-30 August 1982

Literature:

Art of New Guinea. Seprik, Maprik and Highlands. Ethnic Art Galleries, University of California, Los Angeles. November-December 1967. Cat. 127, illustrated
The Ruth & George C. Kennedy Collection of Ethnic Art. Bowers Museum, Santa Ana, California. 29 September-30 December 1979. Fig. 44
Ancestral Art of the Sepik Region New Guinea. Fine Arts Museum of Long Island, Hempstead, New York. 14 July-30 August 1982. Cover image, Cat. 41

*From the World of Dreams: Melanesian Art
and a small retrospective of Surrealist Prints curated by Timothy Baum*
2 May - 3 July 2024



YIMAM ARTIST

Yipwon Spirit Figure
Middle Sepik river, Papua New Guinea
19th century
Wood
Height: 89 in (228 cm)
Inv# 54-5321

Provenance:

Collected by Father Heinemans, Catholic Mission Wewak, Papua New Guinea, 1964 or before
Ex collection Douglas Newton, New York, 1964
Ex collection Ronald Clyne, New York
Parke-Bernet, New York, 11 October 1968, lot 56
Ex collection Ted Weiner, Fort Worth, acquired from the above sale
Ex private collection, New York